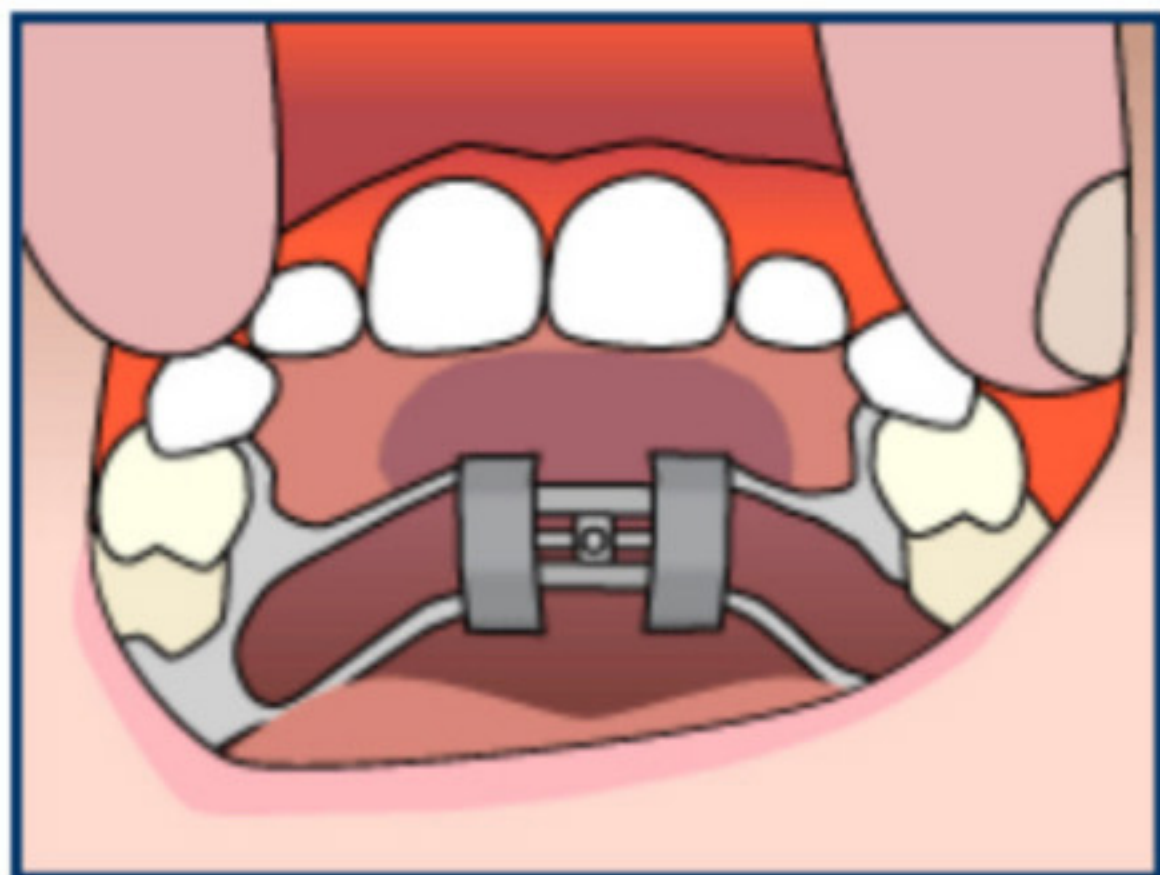
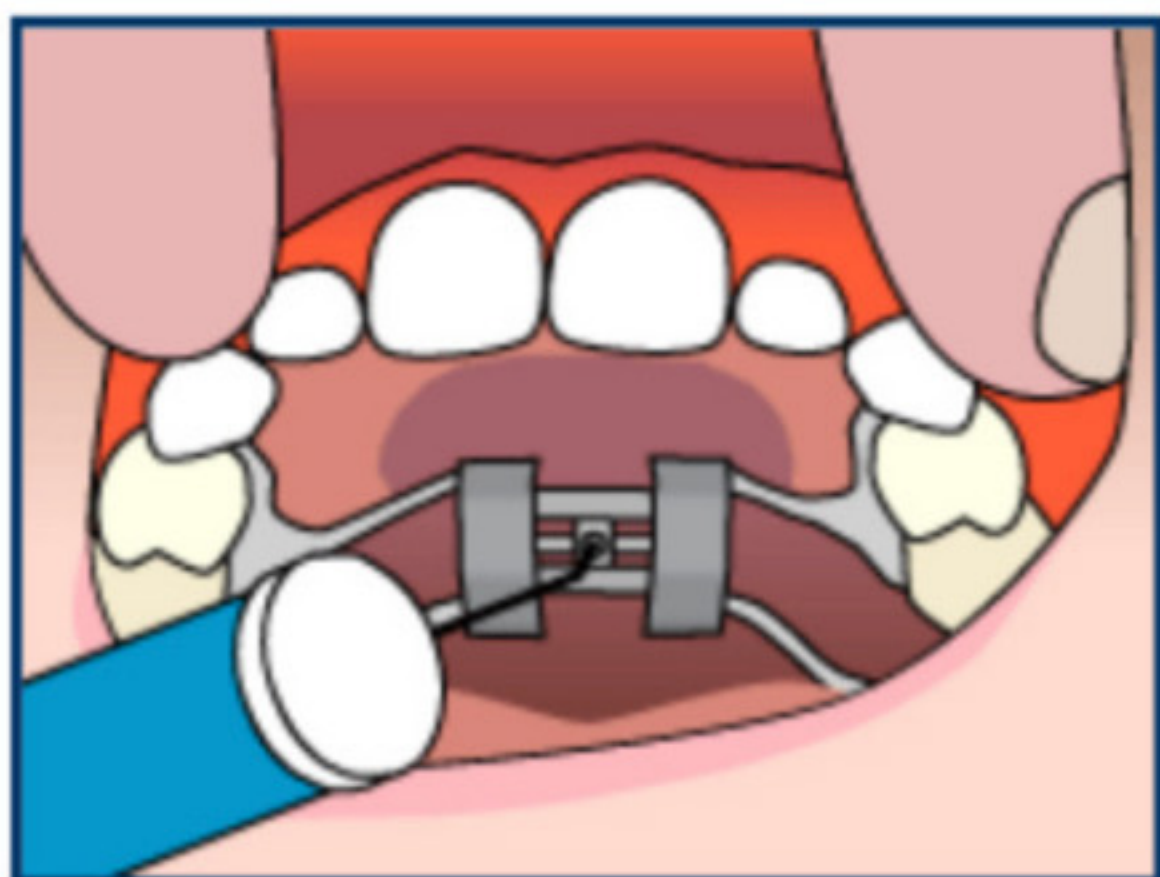


# Palatal Expander Instructions



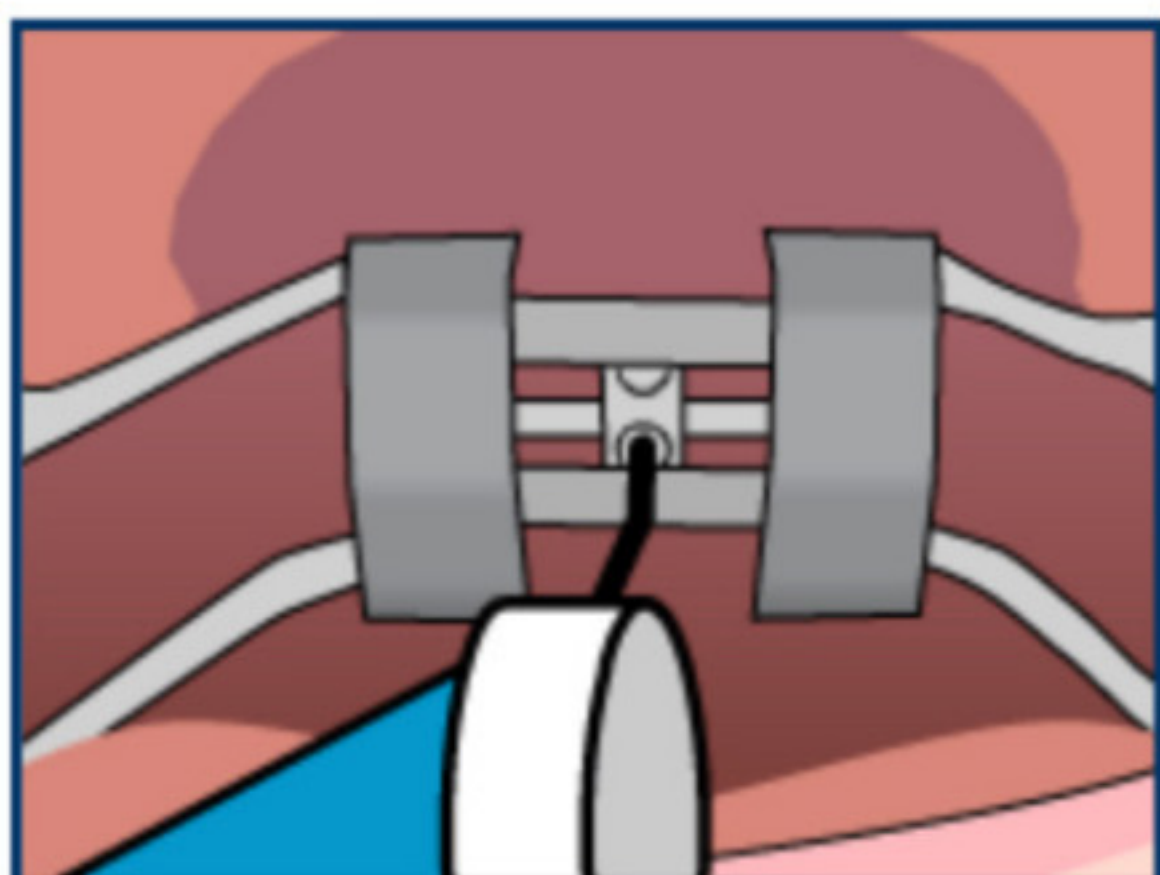
## Step 1

In a well-lit area tip the patient's head back.



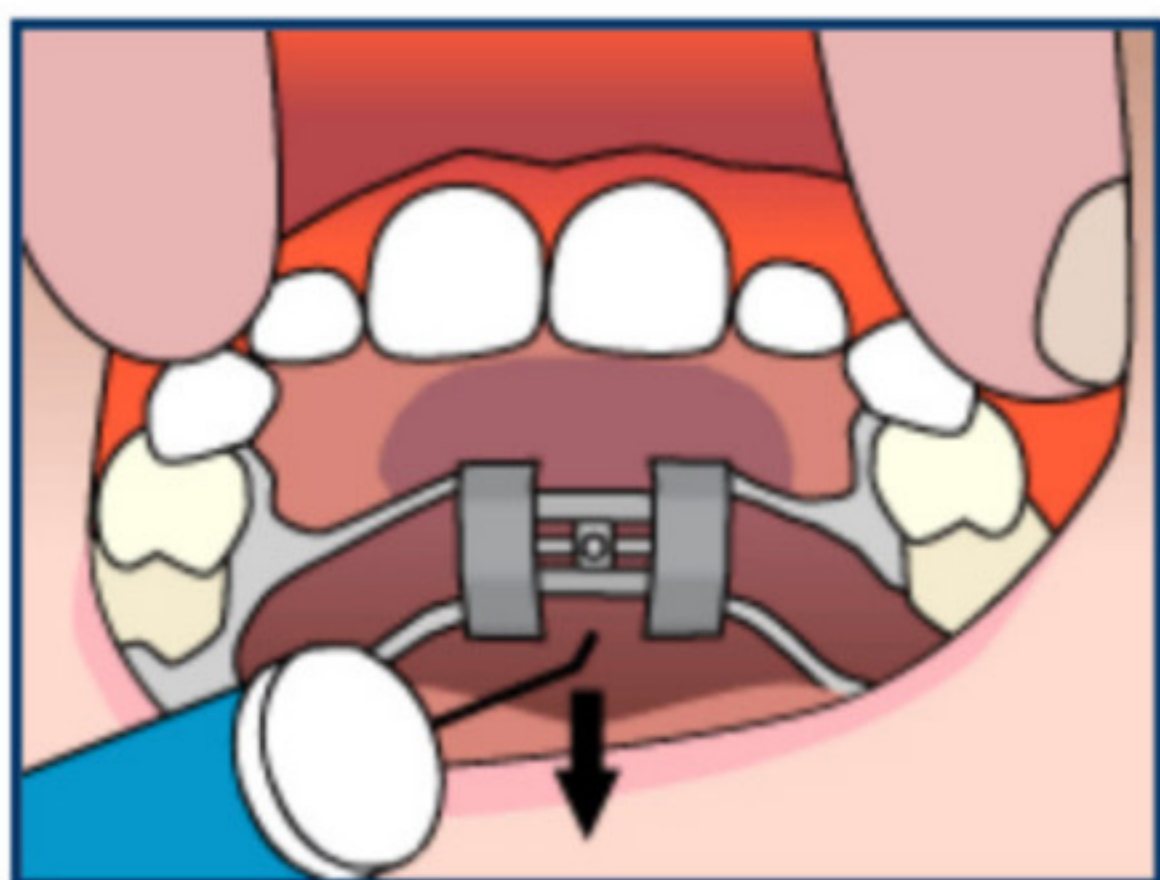
## Step 2

Place the key in the hole until it is firmly in place.



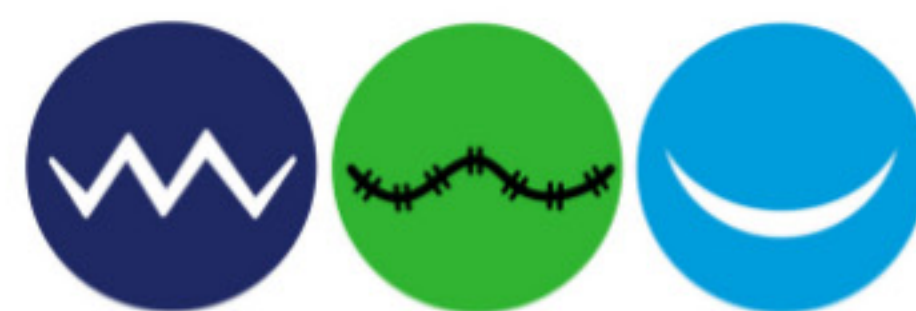
## Step 3

Pushing the key towards the back of the mouth, you will notice the fender will rotate and the new hole will appear. The rotation stops when the key meets the back of the expander.



## Step 4

By pushing back and down towards the tongue, remove the key. The next hole for insertion of the key should now be visible.



THE BRACE PLACE  
ORTHODONTICS

Josh Goldknopf, DDS, PA

Jax Beach • Ponte Vedra

249-0037

[www.thebraceplace.net](http://www.thebraceplace.net)